

Wayfinding: Annotating Your World

Ray Baldwin, Sunil Garg, and Ann Swearingen
University of Washington, Seattle

iamray@u.washington.edu
skgarg@u.washington.edu
annswe@u.washington.edu

Our Research Question



- How do people with differing levels of “nativeness” to a physical environment annotate that environment, either in real space or virtual space?
- Or do they?

Overview

- Methods
- Findings
 - Maps
 - Digital vs. Real
 - Leadership
- Conclusion



Methods

[how we did it]

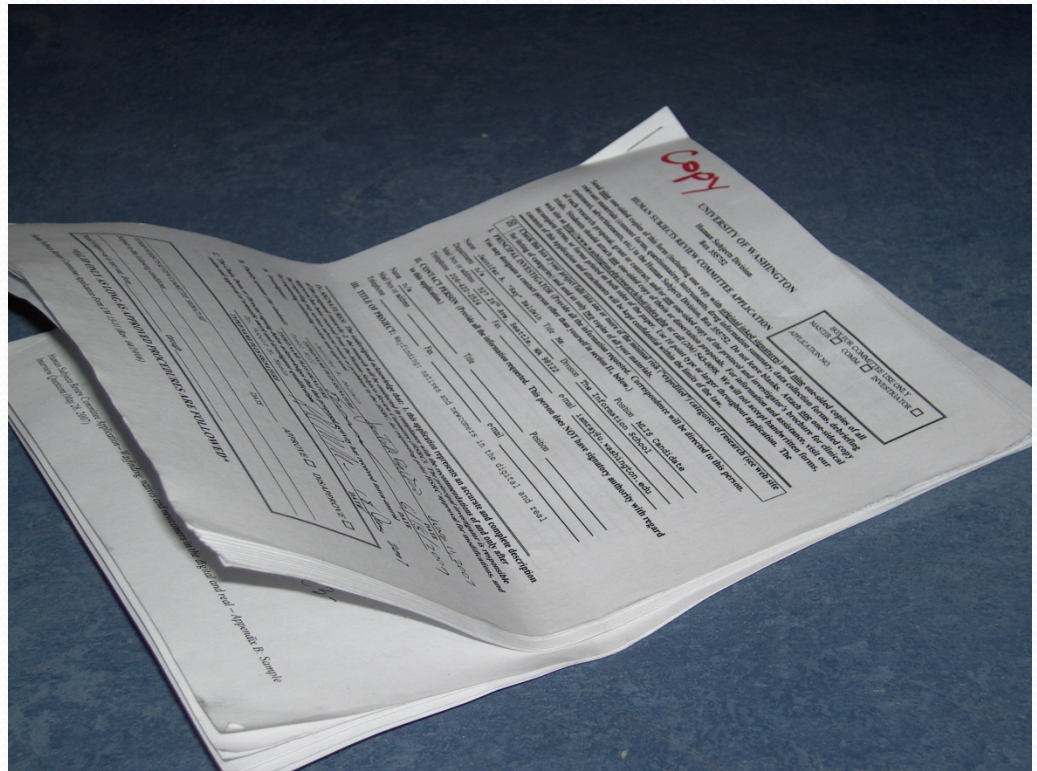
Our Subject Group

- Our fellow students!
 - English language speakers
 - Varying previous experiences in Amsterdam
 - Immediate access
- Located here.



Human Subjects Review Constraints

- Preapproval
- Confidentiality
- Ethics



Research Methods

- Interviews
 - Weeks one and three
- Observations
 - Formal and informal
- Axes of Analysis
 - real/digital
 - native/newcomer
 - coerced/non-coerced

Digital Native
Environment Native

examples:

- Technology oriented
- Lived here for years

Digital Newcomer
Environment Native

examples:

- Non-technology oriented
- Lived here for years

Digital Native
Environment Newcomer

examples:

- Technology oriented
- New here/recent arrival

Digital Newcomer
Environment Newcomer

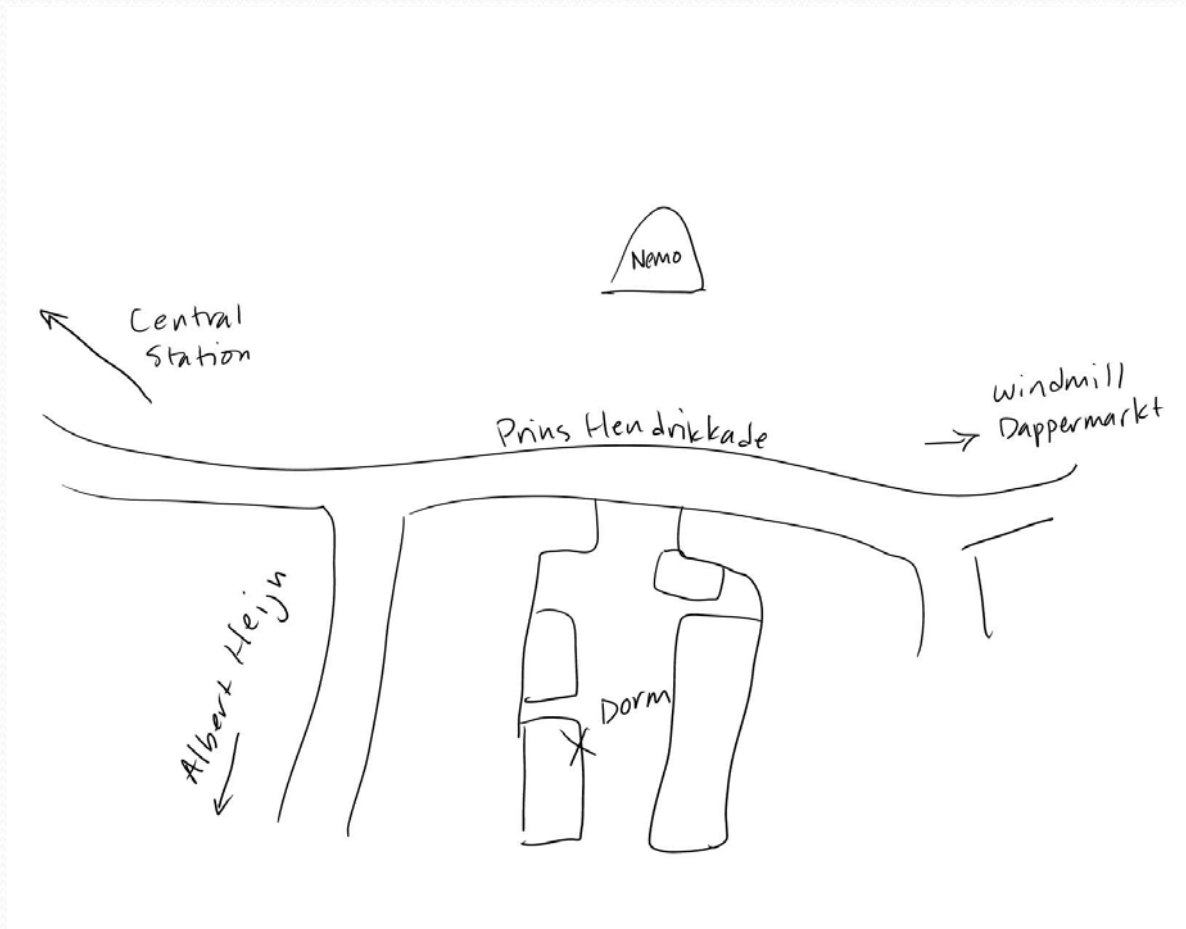
examples:

- Non-technology oriented
- New here/recent arrival

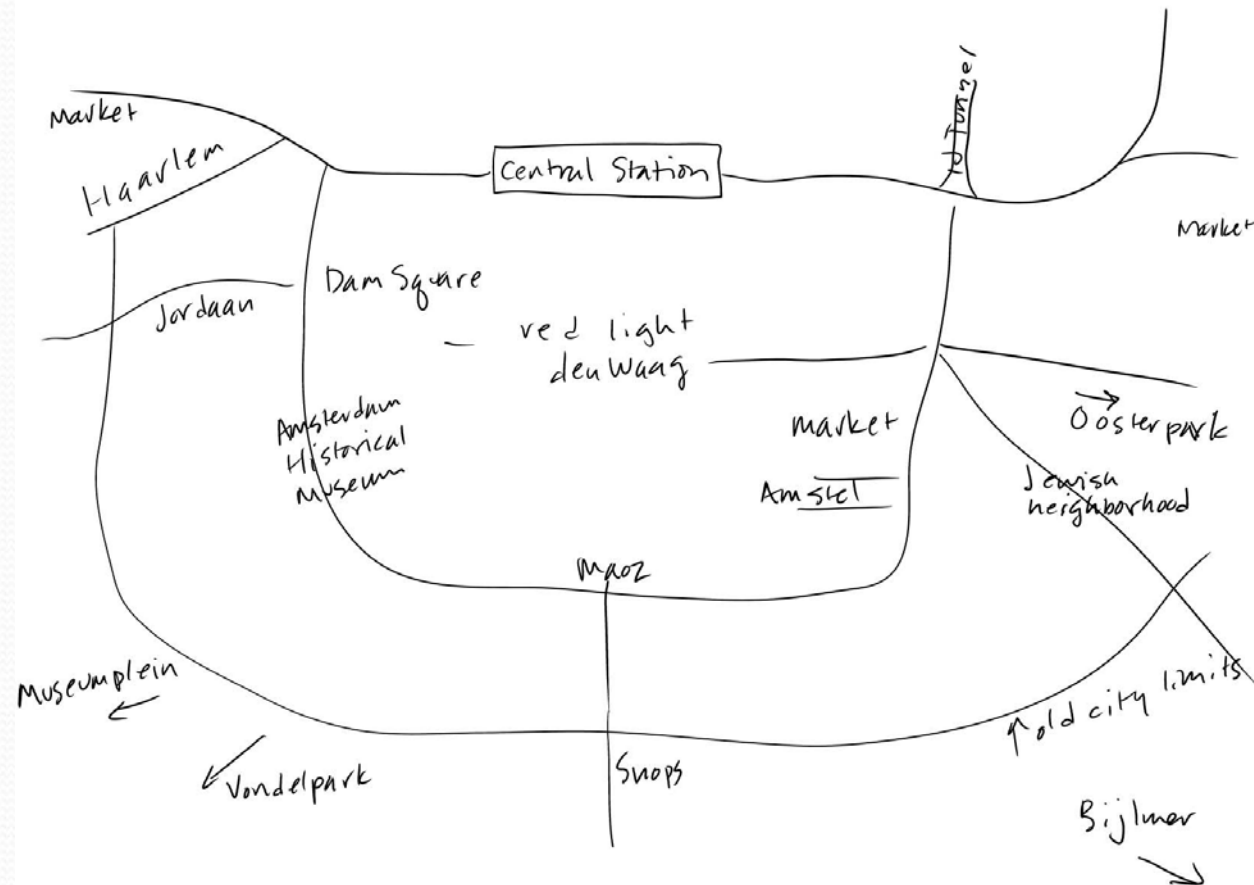
Maps

[what does your neighborhood look like?]

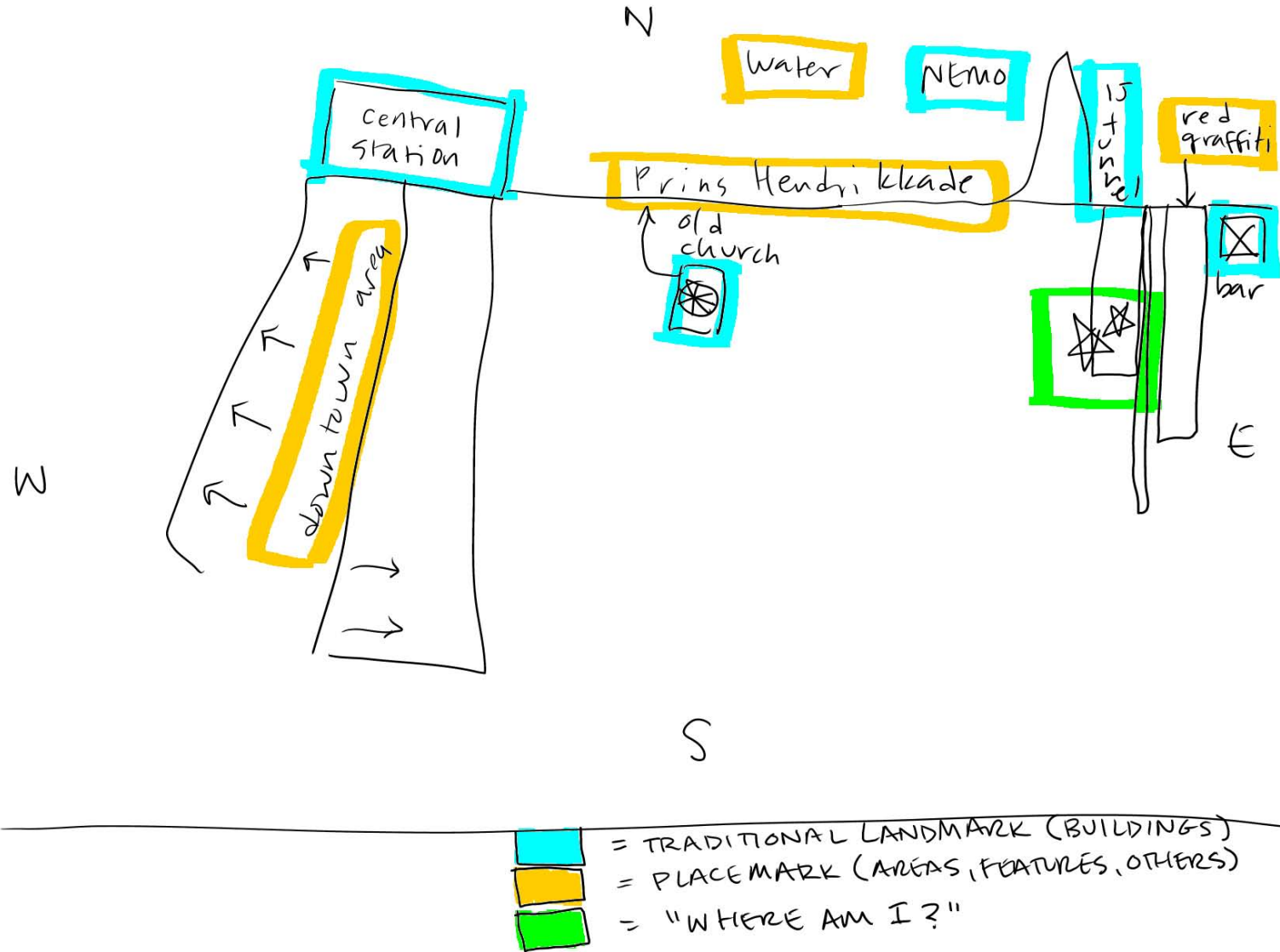
Detail: Less and More



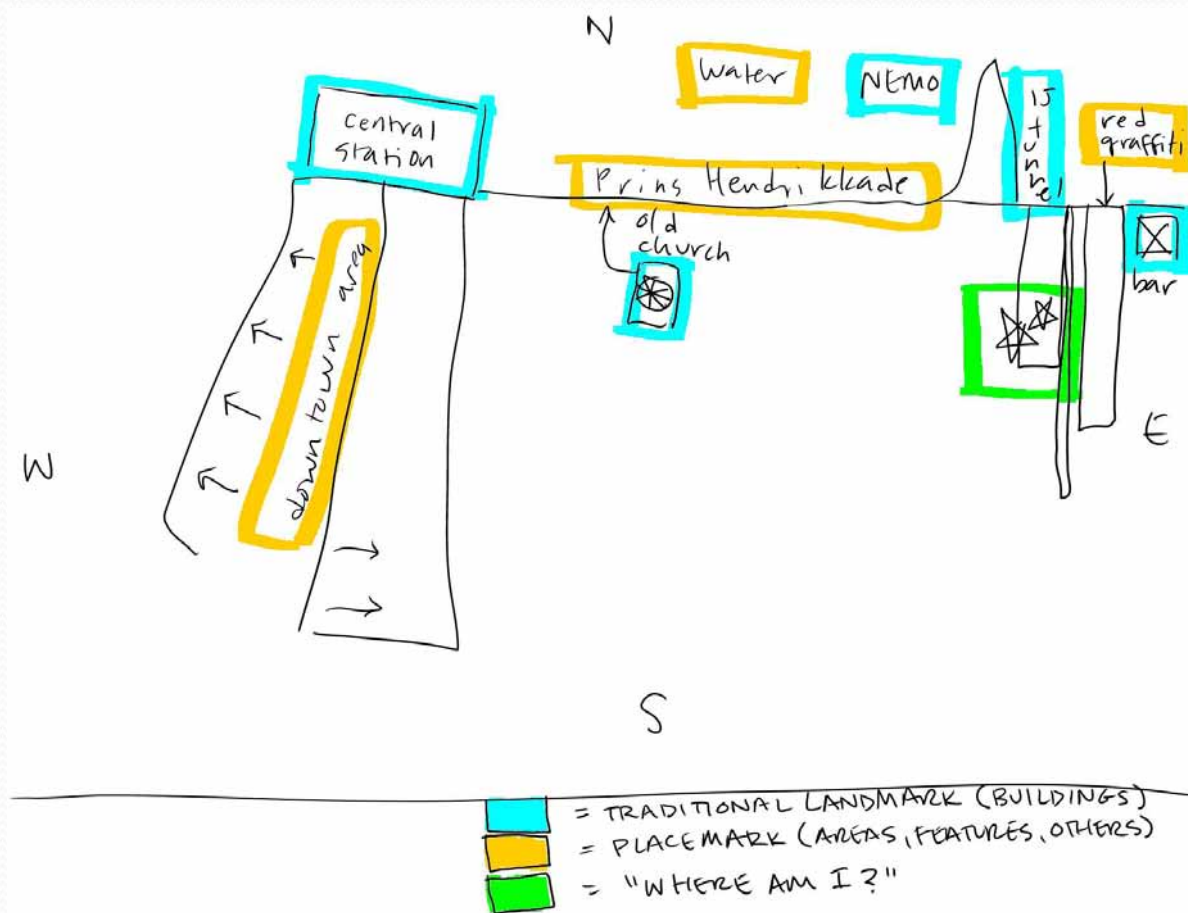
Detail: Less and More



Landmarks: What's Important?



Self-Context: Where am I?



Digital Annotation

[wikis, blogs, and social networks, oh my!]

Getting Lost Online

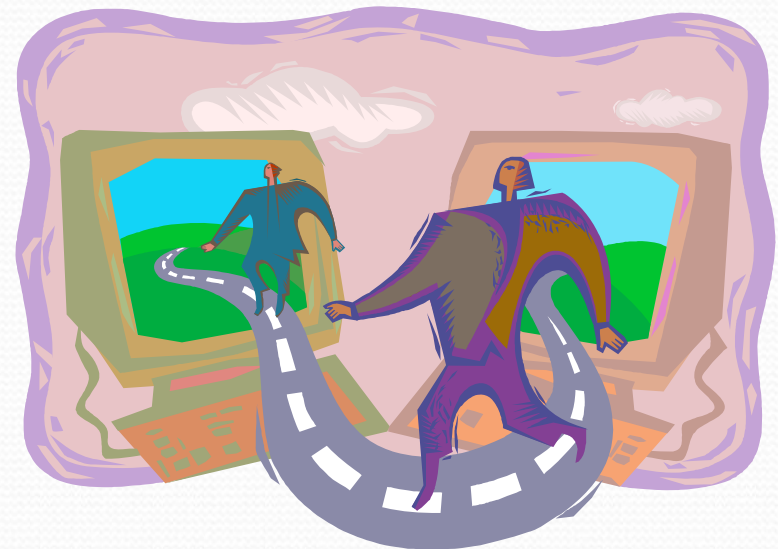
- The Language Barrier
- Usability Issues
- Physical Vulnerability



The Issue of Distance

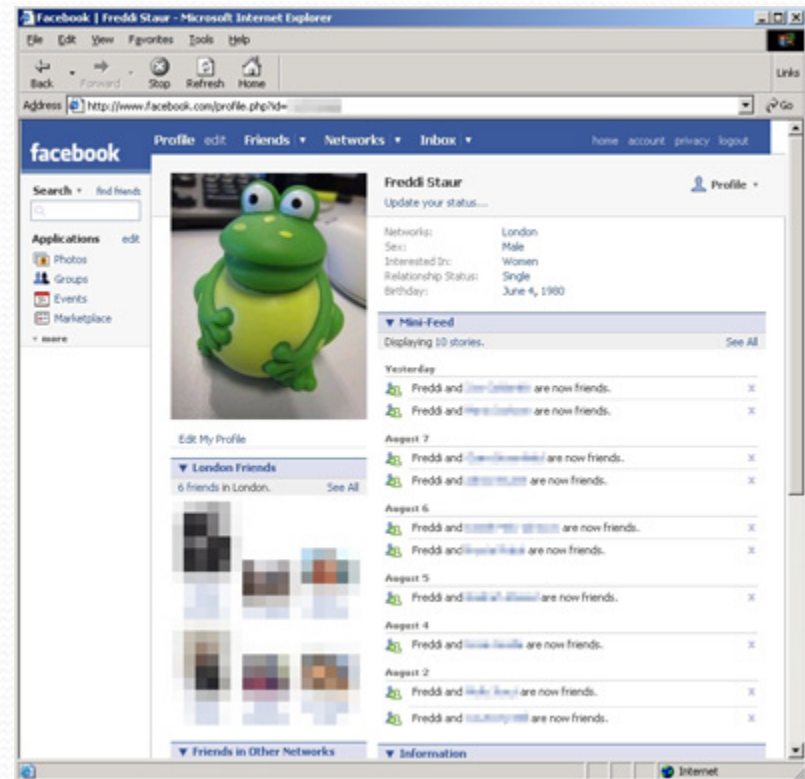
- “The Web is a public place completely devoid of space...We move from place to place but without having to traverse distance.”

–David Weinberger



Online Observations

- Class-related Websites
 - Coercion
- Out-of-Scope Activity



Leadership

[of course the wayfinding researchers never get lost]

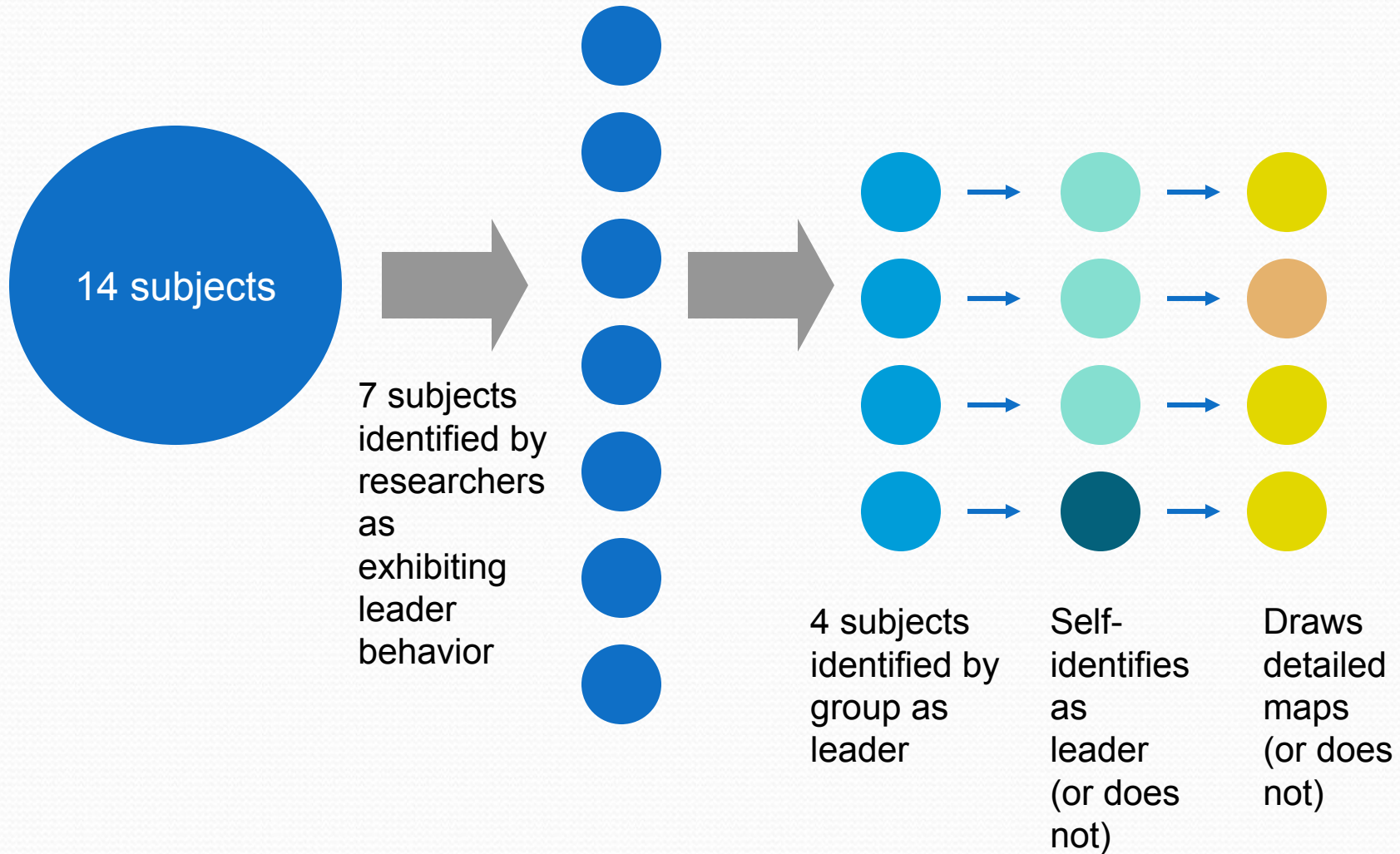
Digital Leadership

- Annotation is required for visibility
- Non-coerced behavior

Real-World Leadership

- Annotation isn't required
- Non-coerced behavior

Real-World Leaders



Looking Ahead

[we're almost done]

Questions for the Future

- Are people who lead in the digital environment the same as those who lead in the physical environment? If they're not, what does that tell us?
- At what point is the “social disruption” of being in a new place overcome?
- How do real-world collaborative spaces (such as a dormitory courtyard) affect annotative wayfinding practices?